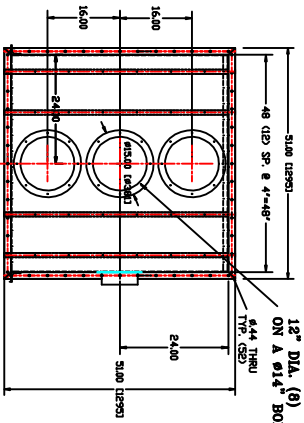


EQUIPMENT IN STOCK

ISSUED FOR:	
APPROVAL:	
DATE:	03-19-2012
CERTIFIED	
DATE:	

QUAN. (1) MODEL: IF-240-TF

PRODUCT INLET CONNECTION



12" DIA. (3) STUDS 9/8"-16 x 1 1/2" LONG
ON A Ø14 BOLT CIRCLE

SPECIFICATIONS

AIR WITHDRAWAL PAN (DIRECT DRIVE)
1000 CFM @ 5.0 IN. SPWG
3 H.P., 460 VAC/ 3 PH/ 60 Hz
MOTOR (LATER) FRAME: 164T RPM: 2890
AIR TO CLOTH RATIO: APPROX. 5:1
(PAN OUTLET DAMPER-OPTIONAL)
STD. FILTER IS 96", 100% POLYESTER, SOCK/CAGE TYPE
ALTERNATE MEDIA AND CONSTRUCTIONS AVAILABLE
DUST LOAD = 50gms/dm3
OUTLET-EMISSION < 30mg/dm3

AM MFG. MODEL IF-240-TF

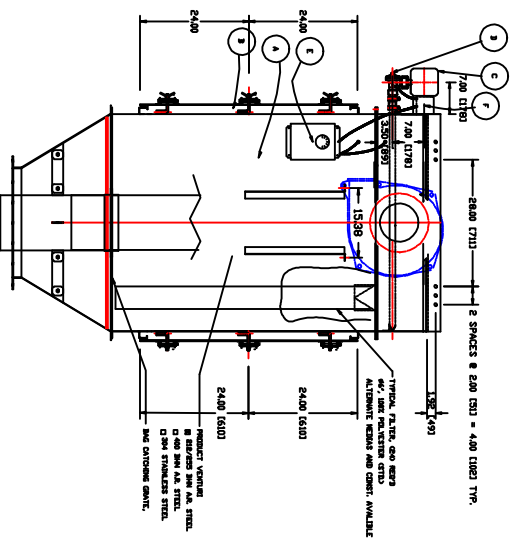
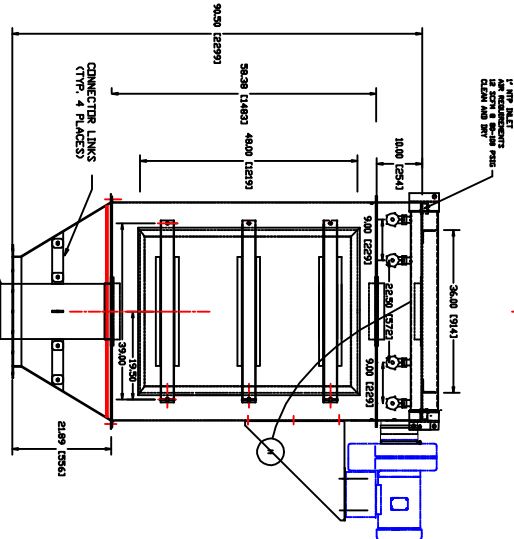
INTEGRAL DUST COLLECTOR--TOP FEED

STANDARD CONSTRUCTION

- ① MAIN HOUSING, 11GA CARBON STEEL
- ② HINGED FILTER ACCESS DOORS, (2) DOORS
- ③ AIR HEADER, 6" SQ. TUBE
- ④ DILATEROR VALVES, (4) 1" NPT
- ⑤ PURGE CONTROLLER ENCLOSURE, PRESSURE
- ⑥ DIFFERENTIAL GAUGE
- ⑦ PULV SURVEILLANCE VALVE ENCLOSURE
- ⑧ CLEAN AIR CHAMBER ACCESS PORTS, (2) PORTS
- ⑨ HEADER DRAIN, BRASS BALL VALVE

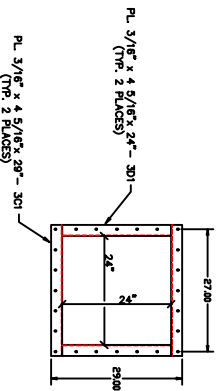
RECOMMENDED ACCESSORIES

PAN OUTLET DAMPER 6" DIAMETER-MANUAL
PYROELECTRIC DIFFERENTIAL PRESSURE SWITCH



CUSTOMER:
P.O. NO.:
JOB NO.:
SERIAL NO.:
DATE:
TOTAL WEIGHT: 1660 LBS.

NOTE: OUTLET CONNECTION BOLTS
TO SPOUT POSITIONER INLET
SEE DRAWING 12-313-2



PL. 3/16" x 4 5/16" x 24" - 301
(TYP. 2 PLACES)

PL. 3/16" x 4 5/16" x 29" - 301
(TYP. 2 PLACES)

REV.	DATE	BY	REVISIONS
			AM MANUFACTURING, LLC 6300 US-31 SOUTH CHARLEVOIX, MI 49720

DRAWN BY: AM
CHECKED:
SCALE: 1:1
DATE: 02-06-2012

TITLE: INTEGRAL FILTER
DUST COLLECTOR
DRAWING NO. 12-313-1