

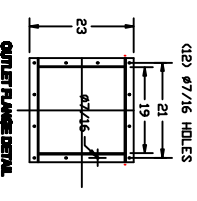
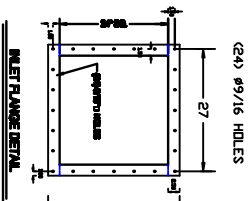
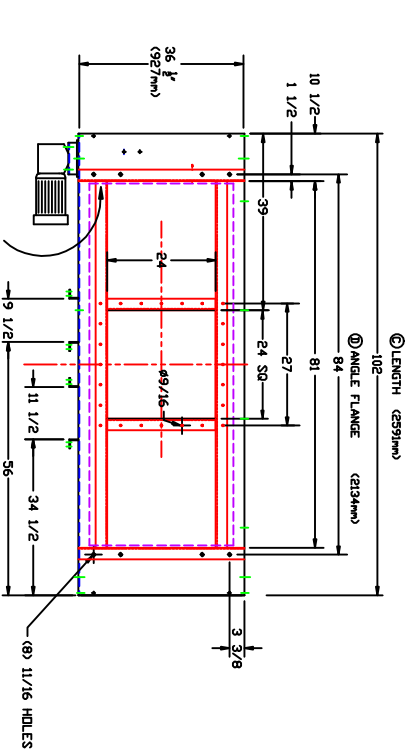
AM MANUFACTURING MODEL SP-240-2V  
SINGLE AXIS HORIZONTAL SPOUT POSITIONER  
DOUBLE HOPPER-VENT THRU DESIGN

**THE AM MFG. LLC SA SINGLE AXIS SPOUT POSITIONER-VENT THRU DESIGN.**

MODEL	SA-24	SA-30	SA-40	SA-60	SA-72	SA-84
A	24"					
B	30"					
C	40"					
D	64"					
WEIGHT	1240 #					

ISSUED FOR:	
APPROVAL:	
DATE:	03-19-2012
CERTIFIED:	
DATE:	

QUAN. (1) MODEL: SP-240-2V



NOTE: OUTLET CONNECTION TYPICAL OF VENT-THRU LOADING SPOUTS. SEE DRAWING 12-313-3

STANDARD CONSTRUCTION

AM MFG. MODEL SP-240-2V  
SINGLE AXIS SPOUT POSITIONER-VENT THRU

INLET CONNECTION: 24" SQUARE (610mm)  
DRIVE MOTOR: 3/4 HP 460/230/3PH/60HZ TEFC  
DRIVE REDUCER: RIGHT ANGLE VDRM 50:1 RATIO  
HOPPER SEAL: HIGH DENSITY FELT DN 304 SS SURFACE  
HOPPER DRIVE: DUAL CHAIN DRIVEN WITH V-GROOVE ROLLERS  
HOPPER CONSTRUCTION: MATERIAL IMPACT 10 GA. 212/255 BHN AR  
MAIN HOUSING: 1/4" A36 MILD STEEL  
PAINT: INDUSTRIAL ENAMEL

RECOMMENDED ACCESSORIES

FACTORY PRE-WIRING  
END OF TRAVEL LIMITS  
END OF TRAVEL SLIP CLUTCH  
VENT THRU DESIGN-SHOW  
RETURN TO CENTER LIMIT

CUSTOMER:  
P.O. NO.:  
JOB NO.:  
SERIAL NO.:  
DATE:

TOTAL WEIGHT: 1240 LBS



NOTE: OUTLET CONNECTION BOLTS TO LOADING SPOUT INLET SEE DRAWING 12-313-3

PRODUCT CONTAINMENT DUST WITHDRAWAL- OUTER STRUCTURAL HOPPER -INNER PRODUCT CONTACT HOPPER

REV.	DATE	BY	REVISIONS
			AM MANUFACTURING, LLC 6300 US-31 SOUTH CHARLEVOIX, MI 49720 231-437-3377
			DRAWN BY: AM CHECKED:
			SCALE: 1:1 DATE: 02-23-2012
			TITLE: SINGLE AXIS SPOUT POSITIONER VENT THRU DRAWING NO. 12-313-2