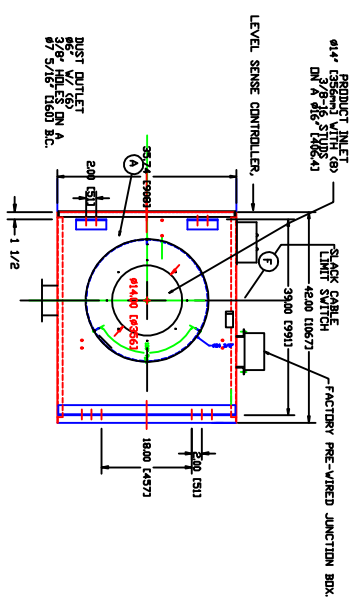


EQUIPMENT IN STOCK

ISSUED FOR:	_____
APPROVAL DATE:	03-19-2012
CERTIFIED DATE:	_____
DATE:	_____

QUAN. (1) MODEL: DL-240-10

CONSTRUCTION DATA
PRODUCT CONTACT MATERIAL
 #212 /256 BRN A.R. STEEL
 #410 /BRN A.R. STEEL
 #304 STAINLESS STEEL
 #URURETANE



CONTROL DATA
 OEMA CLASSIFICATION: NEMA-4
 POWER VOLTAGE: 460/230 VAC/2PH/60HZ
 CONTROL VOLTAGE: 120 VAC

SPECIAL OPTIONS/ACCESSORIES
 INCLUDES AUTOMATIC RAISE SENSING KIT
 INCLUDES PRE-WIRED JUNCTION BOX
 (SEE QUOTE 12-287 FOR ACCESSORIES)

Loading Capacity = 195 CFM @ 60#/cu. ft. (Nominal)
 Average Air Withdrawal = 1000 CFM
 Lifting Speed = 16 FPM Average

STANDARD CONSTRUCTION

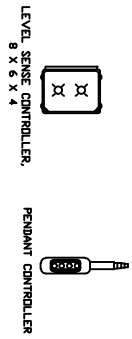
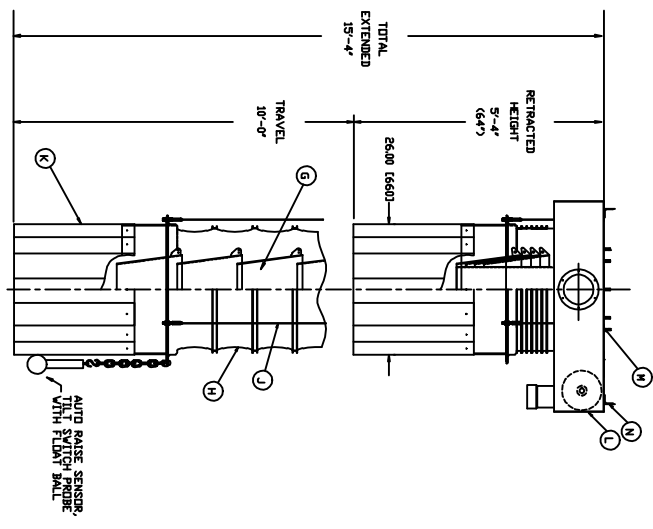
RET. HEIGHT (INCHES)	TRAVEL (FEET)	EXT. HEIGHT (INCHES)	EXT. TRAVEL (FEET)	WEIGHT (LBS)
64"	10'	15'-4"	830	

A- MAIN PAN, 11 GA. CARBON STEEL
B- GEAR REDUCER, 90:1 RATIO
C- VEG MOTOR, 1 HP., 460 VOLT, 3 PHASE 60 HZ 56C FRAME
D- LIFT PULLEYS, FABRICATED CARBON STEEL
E- FULL UP LIMIT SWITCH, NEMA 4
F- SLACK CABLE LIMIT SWITCH, NEMA 4
G- RETRACTABLE CONES, 10 GA. 212/255 BRN AR STEEL
H- RETRACTABLE BELLWDS, 18 OZ. VINYL COATED/POLYESTER FABRIC, T6061 ALUMINUM INNER/OUTER RINGS
J- #32/16 TWC LIFT CABLE
K- SKIRT (2) LAYERS NEOPRENE RUBBER 24" LG.
L- REMOVABLE DRIVE COVER, 11 GA. CARBON STEEL
M- INLET CONNECTION-14" DIAMETER
N- SUPPORT ANGLE

PRODUCT:
LOAD RATE:

CUSTOMER:
P.O. NO.:
QUOTE NO.:
SERIAL NO.:
DATE:

TOTAL WEIGHT:



REV.	DATE	BY	REVISIONS

DRAWN BY: AM	SCALE: 1:1
CHECKED: _____	DATE: 03-19-2012
TITLE: OPEN LOADING RETRACTABLE SPOUT WITH DISCHARGE SKIRT	DRAWING NO. 12-313-6

AM MANUFACTURING, LLC
 6300 US-31 SOUTH
 CHARLEVOIX, MI 49720
 231-437-3377