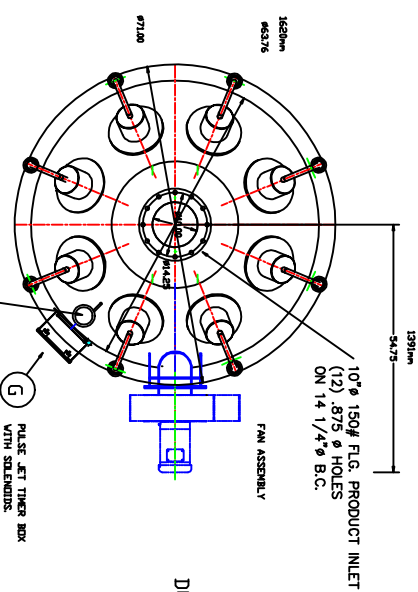


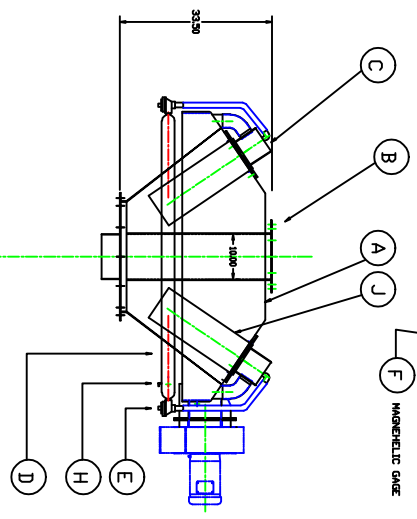
ISSUED FOR:	APPROVAL:
DATE: 03-19-2012	DATE: _____
CERTIFIED	DATE: _____

QUAN. (1) MODEL: IDC-LP-1000

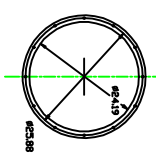
AIR WITHDRAWAL FAN (DIRECT DRIVE)
1000 CFM @ 6.33 IN. SPWG
3 H.P., 480 VAC/ 3 PH/ 60 Hz
AIR TO CLOTH BATIO: 4.3 : 1
(FAN OUTLET DAMPER IS STANDARD)



DUST COLLECTOR FAN



DUST COLLECTOR



NOTE: DUST INLET CONNECTION
CONNECTS TO LANDING SPRUIT
(SEE DRAWING 12-313-3)

MODEL: IDC-LP-1000
INTEGRAL DUST COLLECTOR - LOW PROFILE

STANDARD FILTER CARTRIDGE IS SPUN BOND POLYESTER,
8" DIA. x 22" OAL, 9.5" DIA. ROUND TOP, 50 PLEATS 1/2"x1/2"
GASKET INSTALLED ON BOTH SIDES OF TOP PLATE FLANGE.

NOTE: EACH CARTRIDGE IS 2866 SQ. FT. CLOTH AREA X (8)
AIR TO CLOTH RATIO 231 X 4.3= 9933 CFM
NOTE: WHEN REPLACING CARTRIDGE FILTERS, PLEASE
DO NOT REUSE VALVES, PLEATS
OR PERFORMANCE AND EFFICIENCY WILL DECREASE.

ALTERNATE MEDIAS AND CONSTRUCTIONS AVAILABLE

STANDARD CONSTRUCTION

- ① MAIN HOUSING, IIGA CARBON STEEL
- ② 14" PRODUCT INLET/ 16" B.C.
- ③ FILTER ACCESS COVERS, (8) COVERS
- ④ AIR HEADER, 3" RD. TUBE
- ⑤ DIAPHRAGM VALVES, (8)
- ⑥ PRESSURE DIFFERENTIAL GAUGE
- ⑦ PULSE JET TIMER WITH PILOT SLENDING
- ⑧ HEADER DRAIN, BRASS BALL VALVE
- ⑨ FILTER CARTRIDGE 8" DIA. X 22" LONG
- ⑩ SPUN BOND POLYESTER-COATED.

RECOMMENDED SPARES:

ITEM ① QUAN. (8) FILTER CARTRIDGES AS ABOVE.

PRODUCT:
PROJECT NO.:
CUSTOMER:
P.O. NO.:
PROJECT NO.:
SERIAL NO.:
DATE:
TOTAL WEIGHT: 680 LBS

REV.	DATE	BY	REVISIONS
A	2-14-12	AM	

AM MANUFACTURING, LLC 6300 US-31 SOUTH CHARLEVOIX, MI 49720	231-437-3377
DRAWN BY: AM	SCALE: 1:1
CHECKED:	DATE: 02-17-2012
TITLE: IDC-LP-1000 INTEGRAL DUST COLLECTOR LOW PROFILE	DRAWING NO. 12-313-7