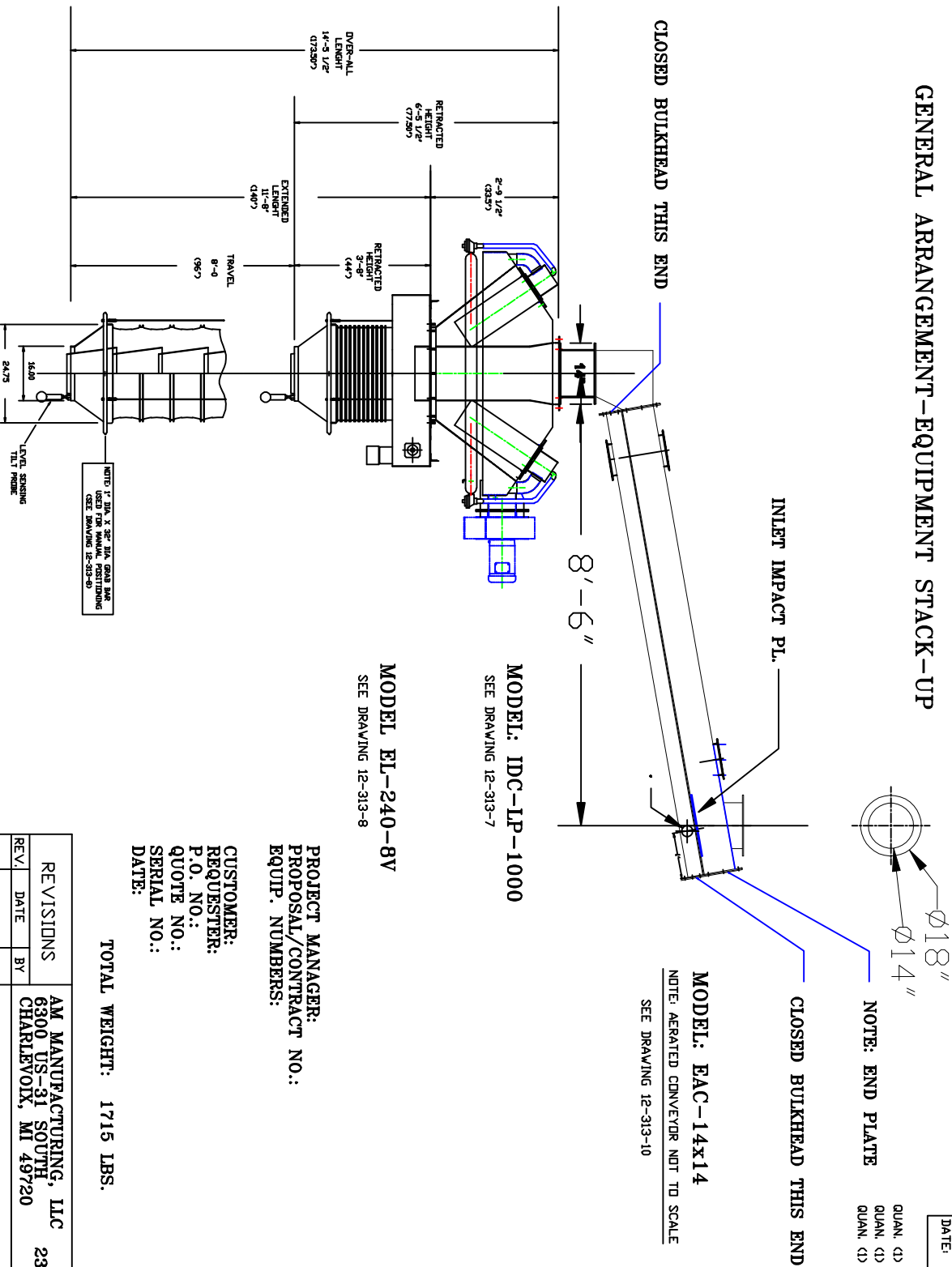


GENERAL ARRANGEMENT-EQUIPMENT STACK-UP



ISSUED FOR:	
APPROVAL	
DATE:	03-19-2012
CERTIFIED	
DATE:	

QUAN. (1) MODEL: IDC-LP-1000  
QUAN. (1) MODEL: EL-240-8V  
QUAN. (1) MODEL: EAC-14X14

NOTE: END PLATE

CLOSED BULKHEAD THIS END

MODEL: EAC-14x14

NOTE: AERATED CONVEYOR NOT TO SCALE  
SEE DRAWING 12-313-10

MODEL: IDC-LP-1000  
SEE DRAWING 12-313-7

MODEL: EL-240-8V  
SEE DRAWING 12-313-8

PROJECT MANAGER:  
PROPOSAL/CONTRACT NO.:  
EQUIP. NUMBERS:

CUSTOMER:  
REQUESTER:  
P.O. NO.:  
QUOTE NO.:  
SERIAL NO.:  
DATE:

TOTAL WEIGHT: 1715 LBS.

NOTE: 1" DIA X 3/8" DIA GEAR AND  
USED FOR MANUAL OPERATING  
(SEE DRAWING 12-313-9)

PRODUCT:  
DENSITY:  
MAX. TEMPERATURE:  
LOADING CAPACITY REQ'D.:

REVISIONS			AM MANUFACTURING, LLC		
REV.	DATE	BY			
			6300 US-31 SOUTH	231-437-3377	
			CHARLEVOLD, MI 49720		
			DRAWN BY: AM	SCALE: 1:1	
			CHECKED:	DATE: 02-26-2012	
			TITLE: GENERAL ARRANGEMENT	DRAWING NO. 12-313-78	